

# THE FEATHERSTONE BUILDING

FURNISHED + FLEXIBLE

The Featherstone Building is a 126,700 sq ft industrial-inspired workspace with a contemporary finish, located in the heart of the Old Street district. 5,773 sq ft - 12,646 sq ft of **Furnished + Flexible** office space is available across two floors.



Sixty Six City Road, Old Street ECI



## Key features

- Situated next to **Old Street Underground station** and close to the Elizabeth line, accessed via Moorgate
- Beautifully designed **double-height reception** with 7.5m floor to ceiling height
- Integrated café, **DL/ Service**
- **DL/ Members Lounge, DL/28** over ground and lower ground floors totalling 13,400 sq ft
- **Communal roof terrace** on the 10th floor including a covered pavilion launching Q4 2024
- **Lower ground cycle store** for 202 cycle spaces and 84 folding cycles
- 222 **lockers** and 21 **showers**
- **3.125m floor to ceiling height** on all floors
- **Openable windows** throughout and exposed concrete ceilings
- Elegant external architecture using a natural brick palette
- An **Intelligent Building** that delivers for the digital future
- **Concrete core cooling** system allows an industrial aesthetic
- Achieved **net zero carbon** construction on completion
- Achieved **EPC Rating 'A'**
- Achieved **WiredScore Platinum**
- Achieved **AirScore Design & Operation Gold**
- Achieved **BREEAM Outstanding**
- Achieved **LEED Platinum**



The Featherstone Building from Bunhill Fields

**Second floor: 6,873 sq ft / 639 sq m**

 50 x fitted desks

 2 x private phone booths

WC On-floor WCs

 1 x 12-person private meeting room  
 1 x 10-person private meeting room  
 1 x 8-person private meeting room

 Various breakout spaces

 Cabled and enabled with high-speed fibre

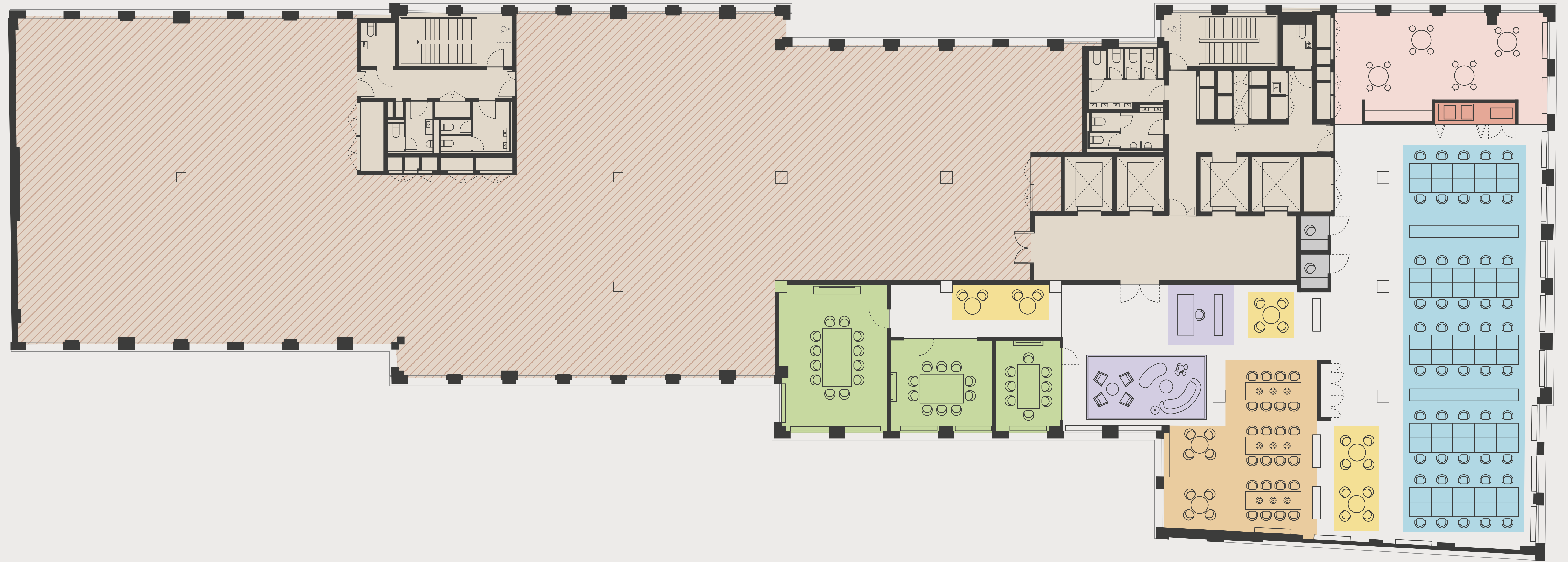
 Reception and waiting area

 Town hall / collaboration space (with 24 x hot desks)


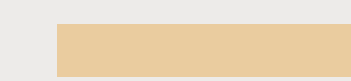
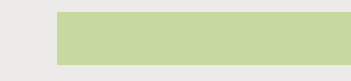
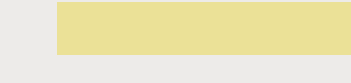

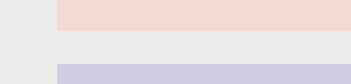
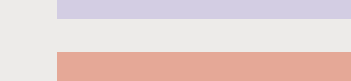
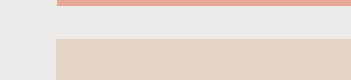

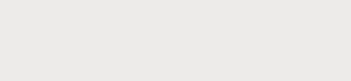
 Kitchenette and seating area

FURNISHED \* FLEXIBLE \* FURNISHED \* FLEXIBLE \*

FEATHERSTONE STREET



CITY ROAD

-  Fitted desks
-  Collaboration / hot desks
-  Meeting rooms
-  Breakout spaces
-  Phone booths
-  Kitchenette
-  Reception
-  Print & comms hub
-  Common parts
-  CAT A office



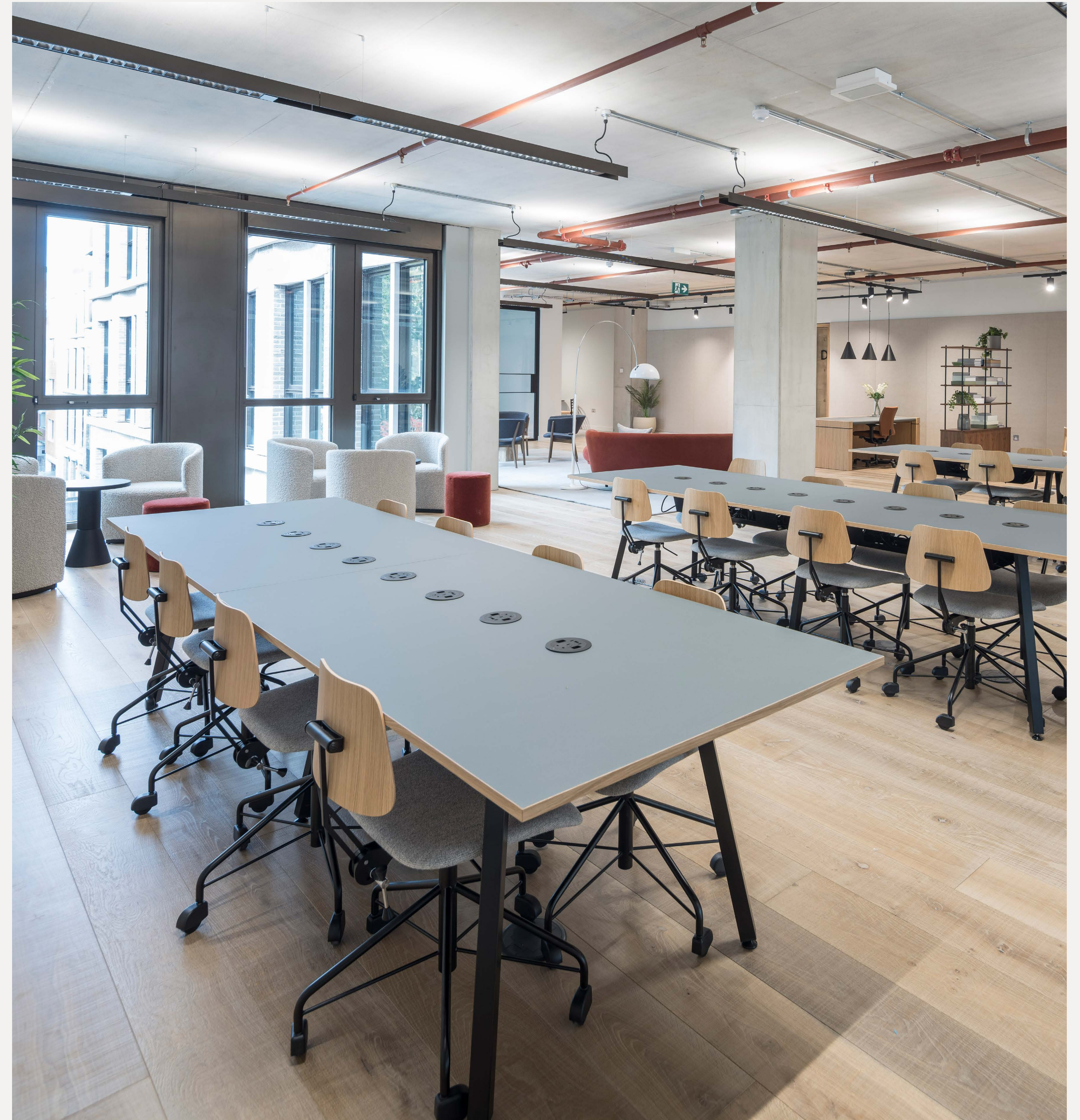
Second floor - Reception and breakout space overlooking Bunhill Fields



Second floor - Workspace overlooking City Road



Second floor - Kitchen and seating area



Second floor - Collaboration space and hot desks

Third floor: 5,773 sq ft / 536 sq m

 50 x fitted desks

 2 x private phone booths

WC On-floor WCs

 1 x 12-person private meeting room  
1 x 10-person private meeting room  
1 x 8-person private meeting room

 Various breakout spaces

 Cabled and enabled with high-speed fibre

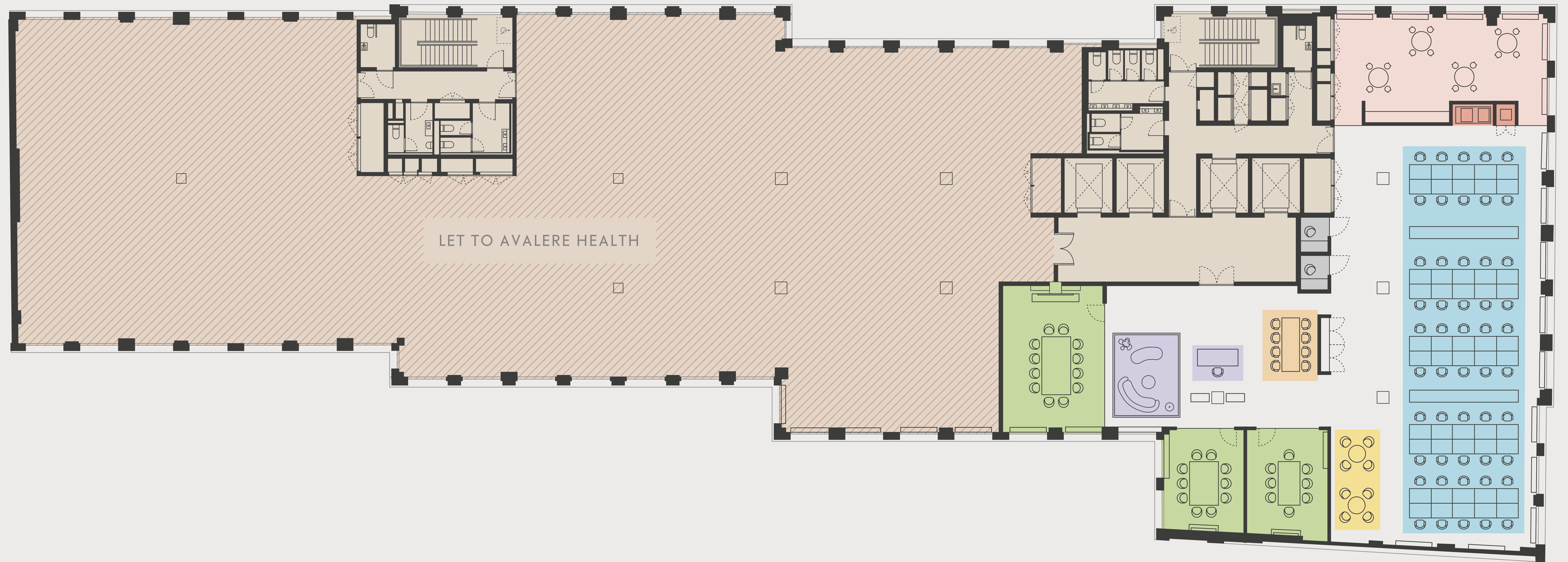
 Town hall / collaboration space (with 8 x hot desks)

 Reception and waiting area


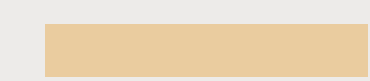
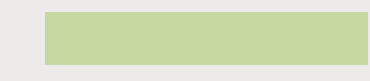
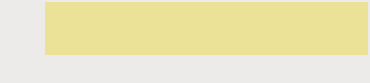

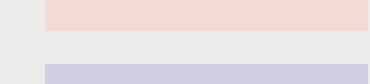
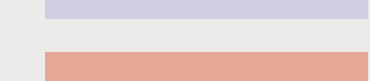
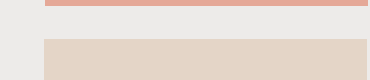

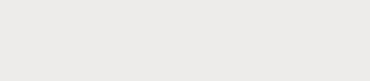
 Kitchenette and seating area

FURNISHED \* FLEXIBLE \* FURNISHED \* FLEXIBLE \* FURNISHED \* FLEXIBLE \* FURNISHED \* FLEXIBLE \* FURNISHED \* FLEXIBLE

FEATHERSTONE STREET



CITY ROAD

-  Fitted desks
-  Collaboration / hot desks
-  Meeting rooms
-  Breakout spaces
-  Phone booths
-  Kitchenette
-  Reception
-  Print & comms hub
-  Common parts
-  CAT A office



Third floor - Reception and breakout space overlooking Bunhill Fields





Third floor - Contemporary workspace



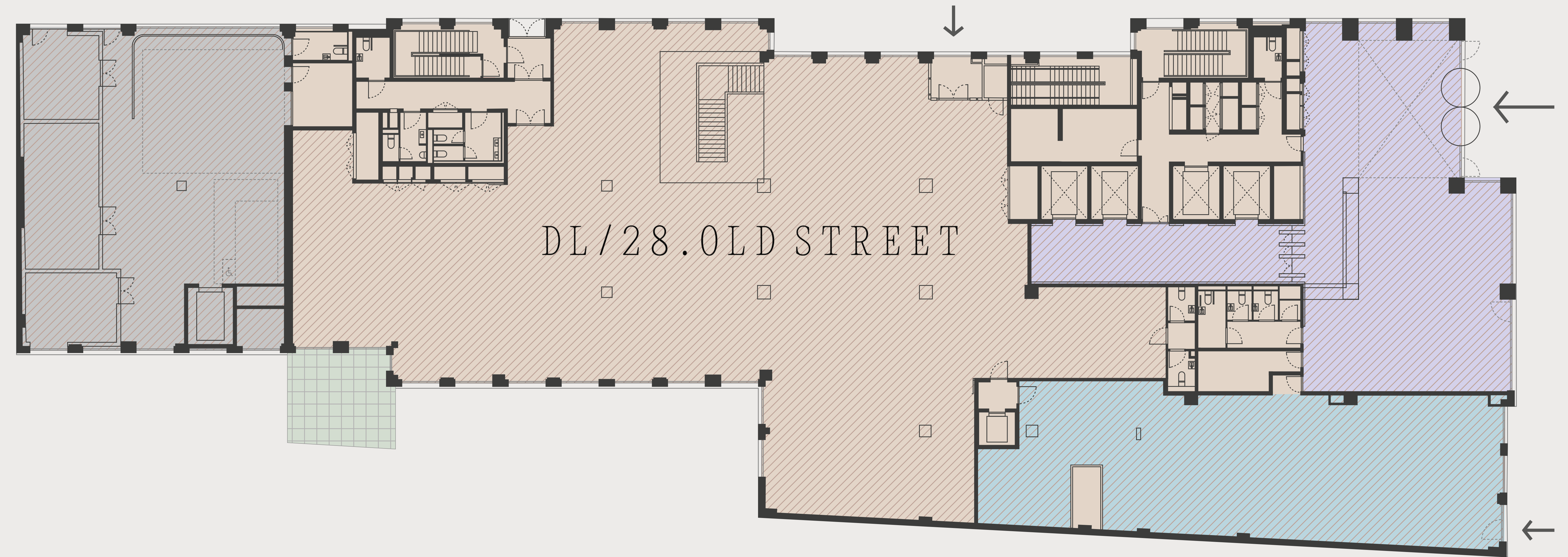
Third floor - Spacious private meeting room

Ground floor: 7,891 sq ft / 733 sq m

FEATHERSTONE STREET



- Reception & café, DL/ Service
- Retail
- DL/ Lounge, DL/28
- Loading bay
- Common parts
- Private terrace



Reception



DL/ Service



Drop-in working at DL/28

## Agents

### Compton

**Shaun Simons**  
ss@compton.london  
07788 423 131

**Michael Raibin**  
mr@compton.london  
07880 795 679

**Sarah Hill**  
sh@compton.london  
07936 338 774

### Knight Frank

**William Foster**  
william.foster@knightfrank.com  
07748 985 951

**Toby Pritchard-Davies**  
toby.pritchard-davies@knightfrank.com  
07468 724 284

**Tom Harvey**  
tom.harvey@knightfrank.com  
07790 344 111

**Francesca Skinner**  
francesca.skinner@knightfrank.com  
07866 191 140

[thefeatherstonebuilding.london](https://www.thefeatherstonebuilding.london)

Whilst every effort has been made to ensure accuracy, no responsibility is taken for any error, omission or mis-statement in these particulars, which do not constitute an offer or contract. No representation or warranty whatever is made or given either during negotiations or in particular by the vendor, lessors or agents Messrs Compton and Knight Frank. All figures are exclusive of rates, service charge, VAT and all other outgoings. The agents have not tested the services. All floor areas are approximate.

Date of preparation April 2024

**DERWENT**  
LONDON



10th floor rooftop pavilion and terrace